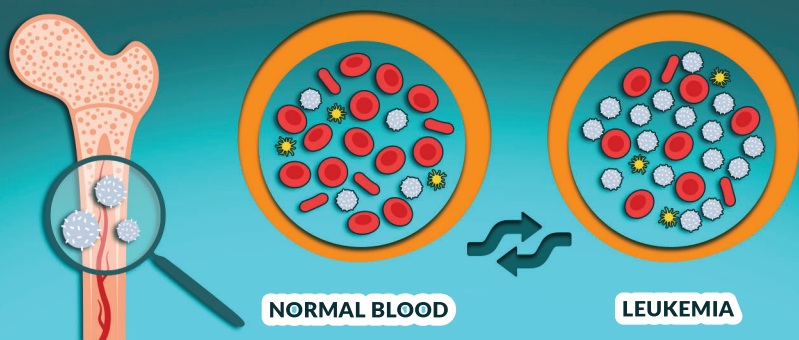


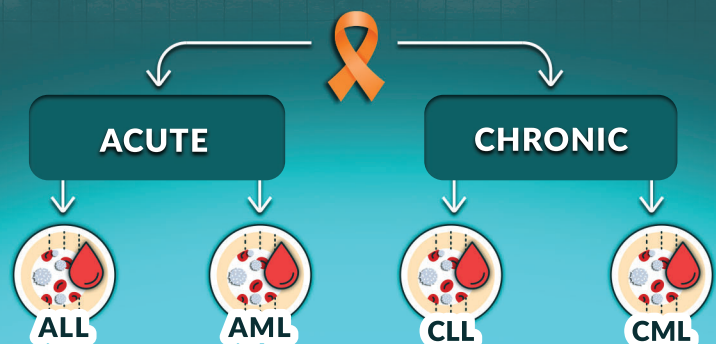
5 FAST FACTS ABOUT Leukemia

1 Leukemia is a type of blood cancer.



It starts in the bone marrow, where blood cells are made. Leukemia mainly involves white blood cells, which help fight infections. Healthy white blood cells grow and divide as our bodies need them. But with leukemia, the white cells grow and spread uncontrollably, crowding out healthy cells.

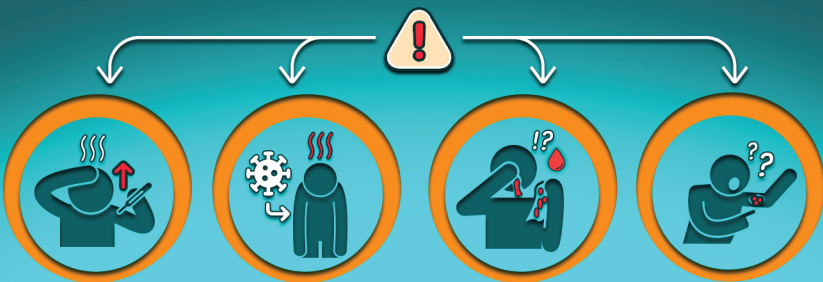
2 There are 4 main kinds of leukemia.



These are grouped as **acute (fast-growing)** or **chronic (slow-growing)**:

- **Acute Lymphocytic Leukemia (ALL)**
Most common childhood cancer
- **Chronic Lymphocytic Leukemia (CLL)**
Most common adult leukemia
- **Acute Myelogenous Leukemia (AML)**
More common in adults than in kids
- **Chronic Myelogenous Leukemia (CML)**
More common in adults or teens

3 Leukemia can cause certain symptoms — or none at all.



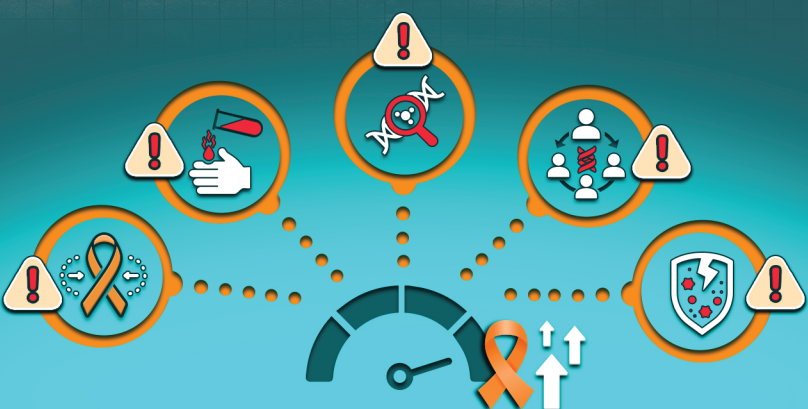
Chronic leukemia may cause no symptoms. Acute leukemia may cause fever or chills, tiredness, infections, and weight loss. Other symptoms: swollen lymph nodes, an enlarged liver or spleen, bruising, nosebleeds, red spots on the skin, night sweats, and bone pain or tenderness.

4 Treatment depends on the person's age, symptoms, and type of leukemia.



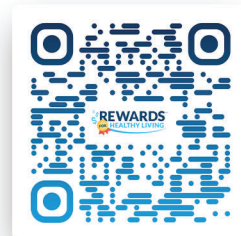
Acute leukemia is usually treated with chemotherapy and immunotherapy. It may also require radiation or a bone marrow transplant. Chronic leukemia is treated the same way — but because this kind of cancer grows slowly, treatment may not be needed right away.

5 Leukemia is hard to prevent.



Doctors aren't sure what causes leukemia, so there aren't many ways to prevent it, especially in kids. Your risk may be higher if you've had cancer before, if you've been around workplace chemicals, or if you have a genetic disorder or a family history of leukemia or other immune problems.

Find out more about leukemia, who's most at risk, and treatment options.



Already registered?

Log in now: rewardsforhealthyliving.com

Still need to sign up?

Go to rewardsforhealthyliving.com and follow the instructions.